



sparco
Teamwork

catalogue

2
0

/ 2020

2
0



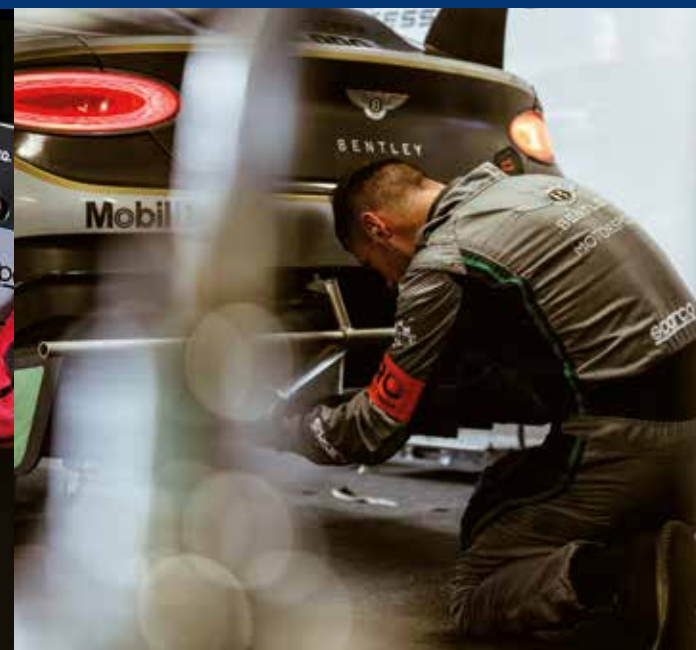
EN



Our aptitude is to reach the best performance, everyday.
This is achieved by merging safety, technology and passion.



PERFORMANCE EVERYDAY



INDEX

2

DRIVE LINE

LEGEND 8



RACING EVO 10



SPORT EVO 11



URBAN EVO 12



DRAGSTER 13



LIGHT LINE

NITRO 16



PRACTICE 18



CUP 20



POWER LINE

ENDURANCE-H 24



ENDURANCE 25



CHALLENGE-H 26



CHALLENGE 27



WORKWEAR

RIVERSIDE REVERSIBLE VEST 31

HOUSTON CARGO TECH-STRETCH PANTS 31

SEATTLE SOFTSHELL JACKET 33

BOSTON CARGO MULTISEASON PANTS 33

PHOENIX FULL-ZIP SWEATSHIRT 35

DENVER DENIM JEANS 35

PARAMOUNT PADDED VEST 36

WILSON WINDSTOPPER 37

PORTLAND POLO 38

TRENTON T-SHIRT 39

ACCESSORIES

MECHANICS MS-5, MS-3, RAIN CLOACK, DUNGAREES, MECA III, TOOLS BELT 42

CHAIRS GRIP SKY, GRIP, ICON 44

BAGS STAGE , TOUR, TRAVEL, TRIP 47

MERCHANDISING HOODIES, SKID COLLECTION, T-SHIRTS, SH-17, SL-17, MX-RACE, CAPS, UMBRELLAS, PADDOCK CHAIR, POUF, PHONE HOLDERS, KEY HOLDERS, SPORT TOWEL, KEY CHAINS, SPORTSACK, BADGE HOLDER, SPARKY PELUCHE, THERMOS, SUNGLASSES 50

YOUTH & BABY T-SHIRTS, HOODIES, SNEAKERS, CAPS, REPLICASUIT, SLEEPSUIT, BODY 55

E-MOBILITY SEM 1 E-SCOOTER 58

POP TOOLS

TOTEM, COUNTER DISPAY "PEDAL SET", SHELF HIGHLIGHTER, FLYER DISPLAY 60

IS[®]

3

STANDARDS AND CERTIFICATIONS

Sparco Teamwork shoes fall under Class II Personal Protective Equipment (P.P.E.) with CE marking in accordance with **European Directive EEC 89/686** or **Regulation (EU) 2016/425**. The **EN ISO 20345:2011** standard marks safety footwear with an "S" (for Safety), defining it as: "Footwear with features designed to protect the wearer from injuries that may result from accidents in the field of work for which the shoes have been designed, with toe caps made to give protection against impact when tested at an energy level of 200 J".

SLIP RESISTANCE CODES	
SRA	Slip resistance tested on ceramic tile wetted with dilute soap solution
SRB	Slip resistance tested on smooth steel with glycerol
SRC	Slip resistance tested under both the above conditions

All **Sparco Teamwork** shoes are certified with SRC slip resistance.

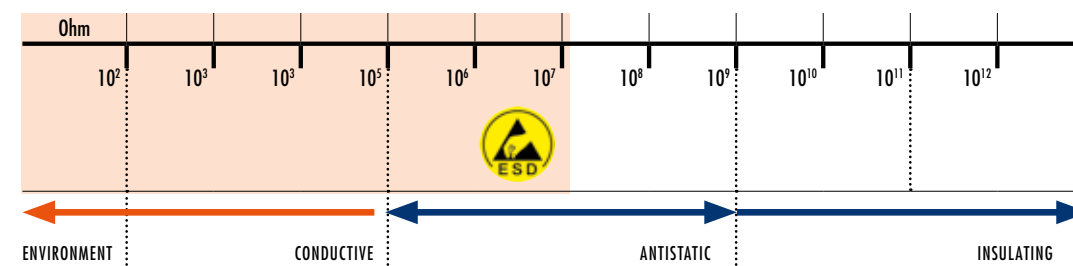
REGULATIONS EN ISO 20345:2011		SAFETY CATEGORY				
MINIMUM REQUIREMENTS	ACRONYM	SB	S1	S1P	S2	S3
200 J TOE CAP	S					
RESISTANT TO HYDROCARBONS	FO					
ENERGY ABSORBING HEEL	E					
ANTISTATIC	A					
ANTIPERFORATION MIDSOLE	P					
DYNAMIC WATER RESISTANT UPPER	WRU					
SLIP RESISTANCE	SR					

ESD STANDARDS CEI EN 61340-5-1

The **ESD symbol (ElectroStaticDischarge)** indicates a static energy discharge that passes from one body to another. On risky workplaces, ESD discharges may also be the basis of serious accidents (trigger a fire) and may damage sensitive machinery and components. ESD shoes are required for:

- Work with microchips
- Production of sensitive electrical components
- In painting
- When working in contact with flammable liquids and gases

An ESD shoe has an electrical resistance ranging from 100 KiloOhm to 35 MegaOhm.



ADDITIONAL FEATURES	
	DESIGNED AND PRODUCED IN ITALY
	ITALIAN DESIGN
	BREATHABLE UPPER
	METAL FREE
	SYNTHETIC UPPER
	GENUINE LEATHER UPPER
	TOP LIGHTNESS

SIZE CHART				
Foot lenght (cm)	Europe	UK	USA (man)	USA (woman)
22,4 - 23,0	36	3½	4½	5
23,1 - 23,6	37	4½	5	5½-6
23,7 - 24,3	38	5	6	6½
24,4 - 25,0	39	5½-6	6½-7	7½
25,1 - 25,7	40	6½-7	7½	8
25,8 - 26,4	41	7½	8½	9
26,5 - 27,0	42	8	9	9½
27,1 - 27,7	43	9	10	10½
27,8 - 28,3	44	9½-10	9½-10	
28,4 - 29,0	45	10½	10½	
29,1 - 29,7	46	11½	11½	
29,8 - 30,3	47	12	12	
30,4 - 31,0	48	13	13	



READY TO PERFORM.

LEGEND

NEW

SIZES: 38-48 ▪ C E ▪ EN ISO 20345:2011

8



Low-cut S3 ESD safety shoe of HF knit-mesh coated with water repellent film, ankle sock, coated reinforcements on the toe and heel, real carbon fiber toe cap. Extremely light, durable and suitable for outdoor use.



07525..NRRS

S3



07525..NRGR

S3



Injected double density PU with energy absorption in the heel.



SI

9



Low-cut SIP ESD safety shoe of HF knit-mesh, ankle sock, coated reinforcements on the toe and heel, real carbon fiber toe cap. Extremely light, durable and suitable for all types of use (indoor and outdoor).



07525..NRAZ

SIP



07525..NRVF

SIP



Injected double density PU with energy absorption in the heel.



07525..BMAF

SIP



DRIVE LINE LEGEND SIP

DRIVE LINE LEGEND S3

RACING EVO

SIZES: 38-48 ▪ C E ▪ EN ISO 20345:2011



S3 ESD / S3 mid-cut safety shoe of fine smooth leather and suede, Racing design, comfortable and durable, ideal for outdoor use.



Injected double density PU with energy absorption in the heel.



SPORT EVO

SIZES: 38-48 ▪ C E ▪ EN ISO 20345:2011



S3 ESD / S3 / SIP Low-cut safety shoe in fine nubuck or suede. Particularly comfortable and durable, suitable for all uses, excellent for outdoor use.



Injected double density PU with energy absorption in the heel.



UNTILL STOCK LAST

URBAN EVO

SIZES: 38-48 ▪ C E ▪ EN ISO 20345:2011

S3 ▪ S1P ▪ SRC ▪



S3 ESD / S3 / S1P low-cut sneaker style safety shoe, comfortable and suitable for prolonged use in professional and urban environments.



07518..BMAZ S3



07518..NRRS S3



07518..BMGR S1P



07518..NRNR S1P

Injected double density PU with energy absorption in the heel.



DRAGSTER

SIZES: 38-46 ▪ C E ▪ EN ISO 20345:2011

S1P ▪ SRC



Low-cut lightweight S1-P safety shoe made of printed MiniDrop-tech fabric and microfibre anti-scratch reinforcements, ideal for indoor use.



07523..NRRS S1P



07523..NRAZ S1P



07523..NRGF S1P

Injected double density PU with energy absorption in the heel.



**LIGHTER
IS FASTER.**



SAFETY FOOTWEAR LIGHT LINE



Cemented
monodensity PU.



S3 low-cut ultra-lightweight running style safety shoe made of microfibre-suede water-resistant, ideal for both indoor and outdoor use.



07522..NRVF S3



07522..NRGR S3



07522..NRAZ S3



07522..RSNR S3



07522..BIBI S3



07522..NRNR S3

PRACTICE

SIZES: 36-48 ▪ C E ▪ EN ISO 20345:2011

SIP ▪ SRC



Cemented monodensity PU.



S1-P low-cut ultra-lightweight running style safety shoe made of breathable 3D mesh and anti-scratch microfibre, ideal for indoor use.



07517..NRRS SIP



07517..NRGF SIP



07517..NRVF SIP



07517..VFAZ SIP



07517..NRAZ SIP



07517..AZAF SIP



07517..NRNR SIP



07517..NRFU SIP

Sizes: 36-43

SIZES: 35-46 - C€ - EN ISO 20345:2011

20

S1P - **SRC**



S1-P low-cut ultra-lightweight made of ultra-breathable jacquard knit fabric and a protective coated reinforcement on the toe, ideal for indoor use.



07526..NRAZ SIP

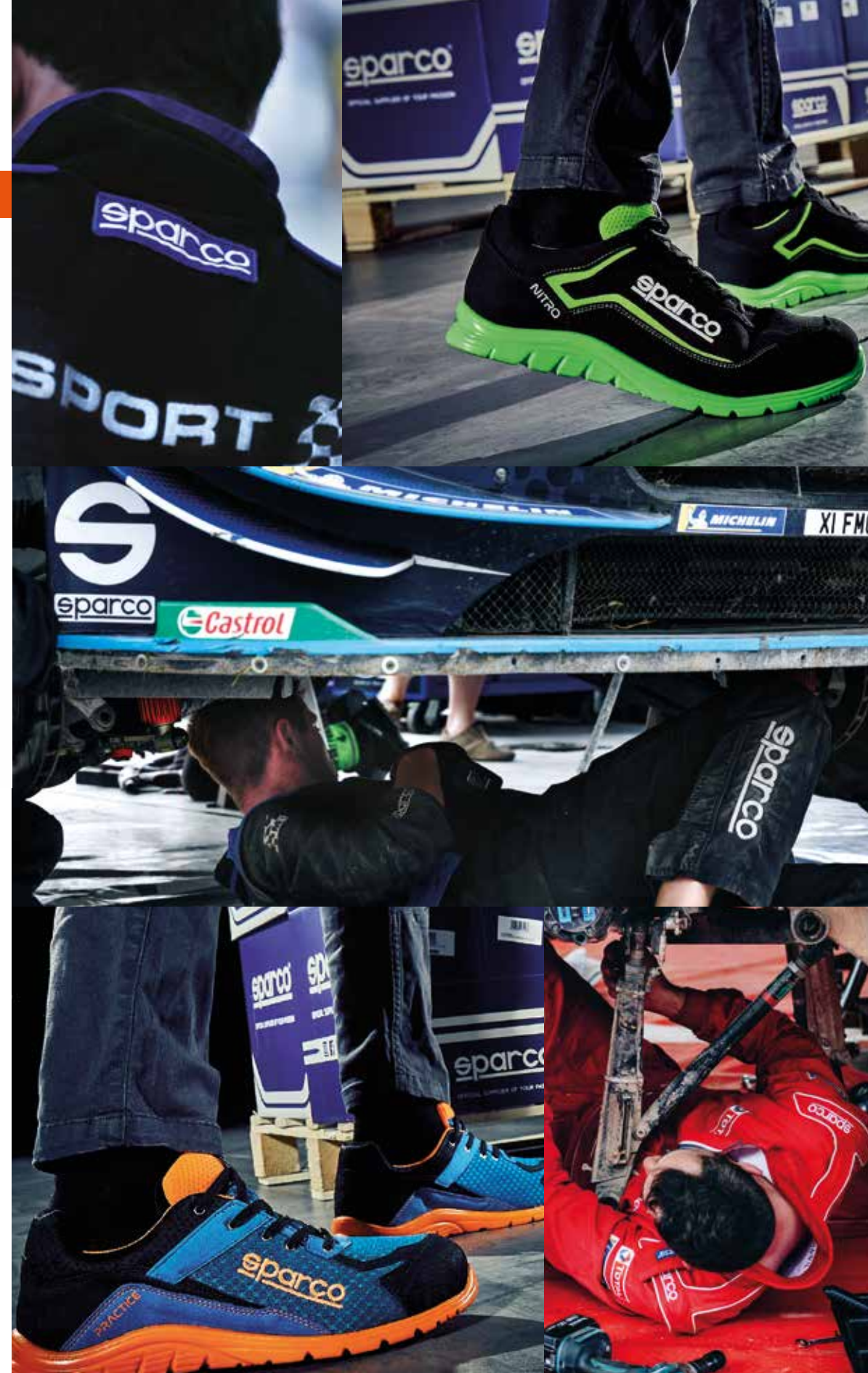
07526..NRRS SIP



07526..NRVF SIP



Cemented EVA-RUBBER
with energy absorption
in the heel.





**EMPOWER
YOUR SAFETY.**

ENDURANCE-H

MADE IN ITALY

SIZES: 38-48 ▪ C E ▪ EN ISO 20345:2011

S3 ▪ SRC



S3 safety boot of fine crust Nubuck and nylon, dull-studded sole, ultra-durable and suitable for outdoor use.



07521..NRNR S3



07521..GRNR S3

Injected double density PU with energy absorption in the heel.



ENDURANCE

MADE IN ITALY

SIZES: 38-48 ▪ C E ▪ EN ISO 20345:2011

S3 ▪ SRC



Low-cut S3 safety shoes of fine crust Nubuck and nylon, dull-studded sole, ultra-durable and suitable for outdoor use.



07520..NRNR S3



07520..GRNR S3

Injected double density PU with energy absorption in the heel.



CHALLENGE-H

SIZES: 36-48 ▪ C E ▪ EN ISO 20345:2011

S3 ▪ SRC



Mid-cut S3 safety shoe of water-resistant nylon with fine suede reinforcements. Particularly durable and suitable for both indoor and outdoor use.



07524..NRNR S3

Injected double density PU with energy absorption in the heel.



CHALLENGE

SIZES: 36-48 ▪ C E ▪ EN ISO 20345:2011

S1P ▪ SRC



Low-cut S1-P safety shoe of fine buffalo leather, particularly durable and suitable for all types of use (indoor and outdoor).



07519..NRRS S1P



07519..NRNR S1P

Injected double density PU with energy absorption in the heel.



**WEAR YOUR
PASSION.**



RIVERSIDE

REVERSIBLE VEST

CODE: 02402 ▪ SIZES: S - 3XL ▪ WEIGHT: 320 GR/M² ▪ COMPOSITION: 100% POLYESTER



02402NR..

HOUSTON

CARGO TECH-STRETCH PANTS

CODE: 02401 ▪ SIZES: S - 3XL ▪ WEIGHT: 320 GR/M² ▪ COMPOSITION: 98% CANVAS COTTON, 2% ELASTANE



02401GSRs..



SEATTLE

SOFTSHELL JACKET

CODE: 02404 ▪ **SIZES:** S - 3XL ▪ **WEIGHT:** 270 GR/M² ▪ **COMPOSITION:** 100% POLYESTER



02404BM..

02404NR..

BOSTON

CARGO MULTISEASON PANTS

CODE: 02400 ▪ **SIZES:** S - 3XL ▪ **WEIGHT:** 260/270 GR/M² ▪ **COMPOSITION:** 98% DRILL COTTON, 2% ELASTANE



02400GS..

02400NR..



PHOENIX

FULL-ZIP SWEATSHIRT

CODE: 02406 ▪ **SIZES:** S - 3XL ▪ **WEIGHT:** 260 GR/M² ▪ **COMPOSITION:** OUTSIDE 100% POLYESTER - INSIDE 100% COTTON



02406BM..

02406NR..

DENVER

DENIM JEANS

CODE: 02409 ▪ **SIZES:** S - 3XL ▪ **WEIGHT:** 350 GR/M² ▪ **COMPOSITION:** 98% COTTON, 2% ELASTANE



02409DE..

PARAMOUNT

PADDED VEST

CODE: 02403 ▪ SIZES: S - 3XL ▪ WEIGHT: 280 GR/M² ▪ COMPOSITION: 100% POLYESTER



02403BM..



02403NR..

WILSON

WINDSTOPPER JACKET

CODE: 02405 ▪ SIZES: S - 3XL ▪ WEIGHT: 100 GR/M² ▪ COMPOSITION: 100% POLYESTER



02405NR..



02405AZ..

PORTLAND

POLO

CODE: 02407 ▪ SIZES: S - 3XL ▪ WEIGHT: 200 GR/M² ▪ COMPOSITION: 100% COTTON

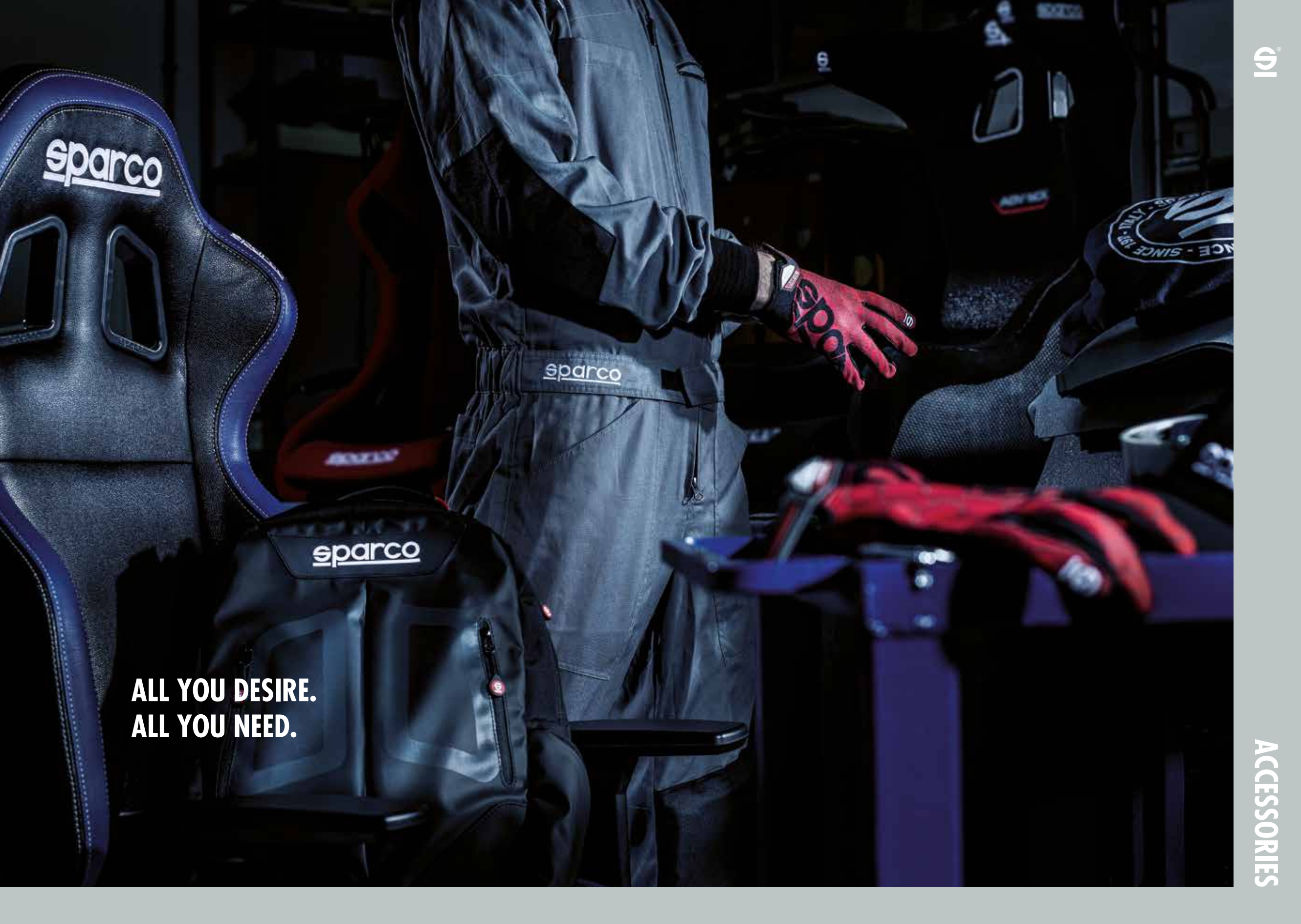


TRENTON

T-SHIRT

CODE: 02408 ▪ SIZES: S - 3XL ▪ WEIGHT: 180 GR/M² ▪ COMPOSITION: 95% COTTON, 5% ELASTANE





**ALL YOU DESIRE.
ALL YOU NEED.**

MS-5

MECHANIC SUIT

COMPOSITION: 85% POLYESTER, 15% COTTON ■ **WEIGHT:** 170/190 GR/M² ■ **SIZES:** S-XXL ■ **LAYERS:** 1



Reinforced elbow material



Elasticated back panel



Removable kneepads



002019NR..



002019GR..

MS-3

MECHANIC SUIT

COMPOSITION: 65% POLYESTER, 35% COTTON ■ **WEIGHT:** 230/250 G/M² ■ **SIZES:** S-XXL ■ **LAYERS:** 1



Front and side pocket



Adjustable wrist straps



Adjustable ankle straps



002015AZ..



002015NR..



002015GR..



002015RS..

RAIN CLOAK

PVC RAIN PROOF

SIZES: S/M - L/XL - XXL ■ **COMPOSITION:** 100% PVC



002398..

MECA III

MECHANIC GLOVES

SIZES: S-XL ■ **COMPOSITION:** 47% POLYESTER, 35% SUEDE, 18% ELASTANE

The palms are in synthetic, scuff resistant hide and there are reinforcements positioned between the thumb and index finger.



Elasticised, printed, scuff resistant fabric.



Velcro belt for tighter fitting.



002093RS



002093AZ



002093NR

DUNGAREES

MECHANIC DUNGAREES

SIZES: S-XXL ■ **COMPOSITION:** 65% POLYESTER, 35% COTTON



0020011NR..



0020011AZ..

TOOLS BELT

ADJUSTABLE RADIO BELT

COMPOSITION: 100% POLYESTER



M-L
min 90 - max 120 cm

016451ML

L-XL
min 120 - max 150 cm

016451LXL

GRIP SKY

CHAIR

44

GRIP SEAT VARIANT WITH SKY LINING ■ **CUSTOMIZATION:** EASY CUSHION APPLICATION ON VEP AREA

Warning: this seat must not be used in a car, it is not a car seat.



00989SKYNRRS



00989SKYNRCE



00989SKYNRDZ

CUSHIONS (compatible with GRIP/GRIP SKY)

LUMBAR SIDE BACKREST KIT



01022RS

01022AZ

01022NR

UNIVERSAL LUMBAR BACKREST



01023NR

ERGONOMIC HEAD CUSHION



01024NR

GRIP

CHAIR

45

GRIP SEAT VARIANT WITH FABRIC LINING ■ **CUSTOMIZATION:** EASY CUSHION APPLICATION ON VEP AREA

Warning: this seat must not be used in a car, it is not a car seat.



00989NRAZ



00989NRVF



00989NRGI

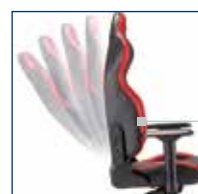
ICON

CHAIR

46

SPARCO R100 CAR SPORTS SEAT REPLICA

Warning: this seat must not be used in a car, it is not a car seat.



Seat adjustable in height and inclination.



2D armrests with multidirectional movement.



Reclinable backrest with micrometric lumbar adjustment.

Anti-tip device with 150° backrest lock.

Base with SGS/BIFMAX5.1/EN1335 certified piston.

High-strength polymer spoke base with 5 solid wheels.



00998NRRS



00998NRVD



00998NRAZ



00998NRNR

STAGE

RUCKSACK

DIMENSIONS: H40 X L30 X P14 ■ **WEIGHT:** 0,76 KG ■ **CAPACITY:** 16 LT ■ **MATERIAL:** POLYESTER

2 hidden front pockets with graphics that echo the Sparco seat belt slider.



Ergonomic padded and back lined with breathable mesh, horizontal band for inserting telescopic trolley bag handle.



Padded seat belt style shoulder straps.

Inner pocket for inserting PC up to 15". Customised Sparco inner lining.



Handle covered in soft-touch coated fabric.

2 side pockets with hidden zip opening.



016440NRRS



016440NRAZ



016440NRNR

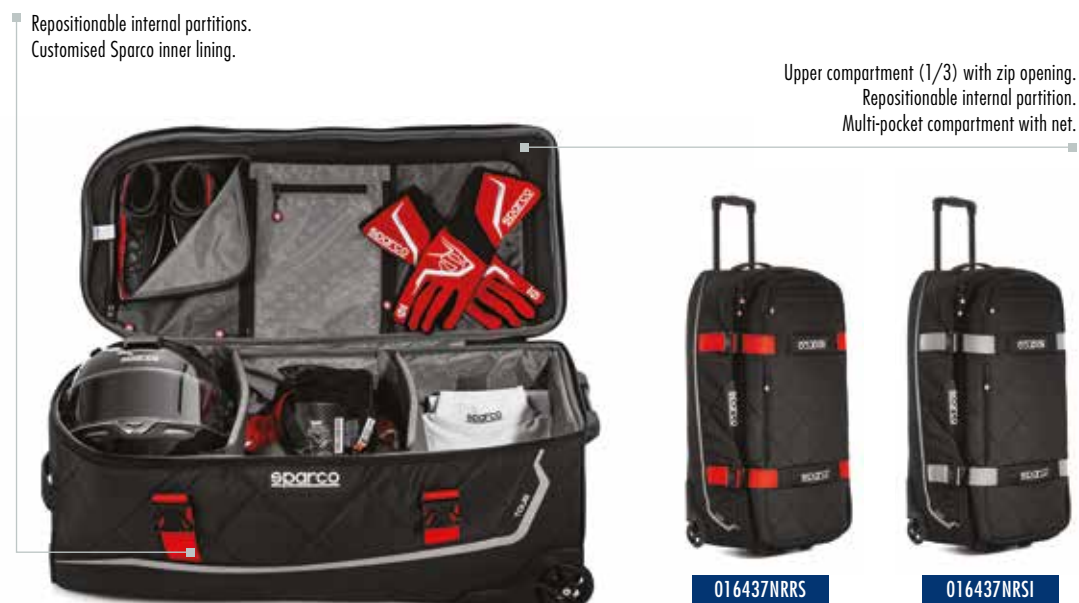
47

TOUR

TROLLEY BAG

48

DIMENSIONS: H40 X L84 X P38 ■ **WEIGHT:** 4,7 KG ■ **CAPACITY:** 127 LT ■ **MATERIAL:** COATED POLYESTER



TRAVEL

SOFT CABIN SIZE TROLLEY

DIMENSIONS: H25 X L55 X P35 ■ **WEIGHT:** 3 KG ■ **CAPACITY:** 48 LT ■ **MATERIAL:** COATED POLYESTER



TRIP

BAG WITH SHOULDER STRAP

DIMENSIONS: H35 X L66 X P38 ■ **WEIGHT:** 2,1 KG ■ **CAPACITY:** 87 LT ■ **MATERIAL:** POLYESTER



49

HOODIES

COMPOSITION: 50% COTTON , 50% POLYESTER, BRUSHED 280 G/M² ■ SIZES: S - XXL

HOODIE 1977



01268NR..

HOODIE MOTORSPORT



01267BI..

HOODIE PERFORMANCE



01266BM..

HOODIE PUNISH



01270NR..

HOODIE VINTAGE



01269NR..

SWEATSHIRT 1977



01271NR..

Round neck.

SKID COLLECTION

COMPOSITION: 100% POLYESTER ■ SIZES: S - XXL

POLO SKID



01265BINR..



01265NRBI..



01264BIAZ..

T-SHIRT SKID



01264AZBI..

T-SHIRTS

COMPOSITION: 100% COTTON ■ SIZES: S - XXL

K-CREW



01261BI..



01261AZ..

TRACK



01262BI..



01262BM..

TRON



01263BI..



01263NR..

1977



01260BI..



01260BM..

COMPOSITION: 50% POLYESTER, 25% COTTON, 25% RAYON ■ SIZES: S - XXL

CIRCUIT



01235..NR

CORPORATE



01236..NR

HANDCRAFTED



01237..NR

PUNISH



01239..NR

VINTAGE 77



01242..NR



01242..IN



01242..GR

RALLY



01240..IN



01240..NR

SH-17

LEATHER AND BREATHABLE FABRIC FASHION SNEAKERS

SIZES: 36 - 46

Detail of the loop inspired by the curves of the R100s seat belt holes.



Detail on the heel inspired by the curves of the SPX seat belt holes.



001262..SIAZ



001262..NRRS



001262..BM



001262..NR

SL-17

LIGHT LEATHER LOW FASHION SHOE

SIZES: 36 - 46

Detail of the loop inspired by the curves of the R100s seat belt holes.



Detail on the heel inspired by the curves of the SPX seat belt holes.



001263..BINR



001263..NRRS



001263..AZBI



001263..NRBI

MX-RACE

LIGHTWEIGHT AND BREATHABLE SNEAKERS

SIZES: 39 - 48

Reinforcements and heel leather textured.

Antistatic VIBRAM sole in EVA, oil and hydrocarbons resistant.

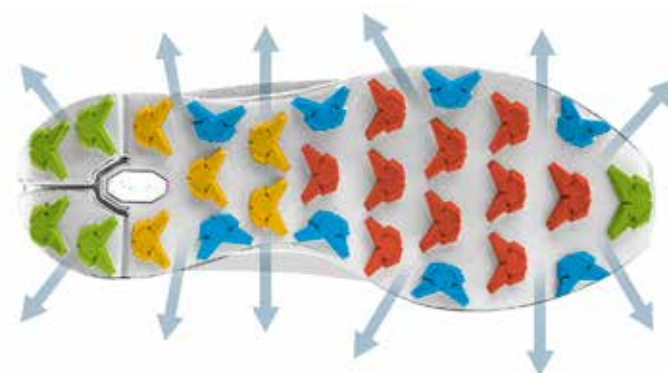


Internal lacing system with ribbon loops.

High breathability and texture quadrilateral mesh with honeycomb structure.

001216..NR

High grip and shock absorber VIBRAM sole for maximum comfort and low stress.



- GRIP
- TRACTION
- BRAKING
- CUSHIONING
- STABILITY
- SELF-CLEANING

CAPS

54

FLEXFIT - ORIGINAL CAP

COMPOSITION: 63% Polyester, 34% Cotton, 3% P.U. Spandex.
SIZES: S/M - L/XL



01245..AZ



01245..NR

01245..BI

01245..BM

REBEL

01229NR

COMPOSITION: 100% Acrylic fabric with PVC adjustable strap.

40TH

01231BM

COMPOSITION: 97% Cotton, 3% elasticised Spandex.



1977

01230NR

COMPOSITION: 100% Acrylic fabric polyester mesh with PVC adjustable strap.



WINDY

01232BMAZ

COMPOSITION: 100% Acrylic fabric.



YOUTH & BABY

55

T-SHIRT FUTURE DRIVER

SIZES: 3-4, 5-6, 7-8, 9-11 (years)

COMPOSITION: 100% Cotton with digital print



017013BI..



017013NR..

NEXT GENERATION SWEATSHIRT

SIZES: 3-4, 5-6, 7-8, 9-11 (years)

COMPOSITION: 80% Cotton, 20% Polyester with digital print



017017NR..

YOUTH SNEAKERS SH-17

Leather and breathable fabric fashion sneakers

SIZES: 26-28-30-32-34



001262..SIAZ

YOUTH BASEBALL CAP (REBEL)

COMPOSITION: 100% Acrylic



017015

YOUTH BEANIE (WINDY)

COMPOSITION: 100% Acrylic

DIMENSIONS: L18 x 19H



017019BMAZ

EAGLE 2.0 BABY REPLICASUIT

SIZES: 3-6, 6-9, 9-12, 12-18 (months)

COMPOSITION: 100% organic Cotton with digital print



017012AZ..

BABY SLEEPSUIT

SIZES: 3-6, 6-9, 9-12, 12-18 (months)

COMPOSITION: 100% organic Cotton with digital print



017018AZ..

BABY RACER SWEATSHIRT

SIZES: 6-12, 12-18, 18-24 (months)

COMPOSITION: 80% Cotton, 20% Polyester with digital print



017016NR..

T-SHIRT BABY RACER

SIZES: 6-12, 12-18, 18-24 (months)

COMPOSITION: 100% organic Cotton with digital print



017010NR..

BODY BABY RACER

SIZES: 3-6, 6-12, 12-18, 18-24 (months)

COMPOSITION: 100% organic Cotton with digital print



017011BI..

BABY HAT

SIZES: 0-3, 3-6, 6-12, 12-24 (months)

COMPOSITION: 100% organic Cotton with digital print



017014

FOLDABLE UMBRELLA

Foldable automatic polyester umbrella with light. Ø 96 cm



099067

PADDOCK



The comfortable Sparco paddock Chair has an aluminium frame and is finished in coloured Oxford 600D fabric. The soft arms are padded for maximum comfort at all times. Easy to transport thanks to its folding mechanism.

0990058

LEATHER PHONE HOLDER

DIMENSIONS: S (iPhone 6, 6s, 7, 8) M (iPhone X, XS)
L (iPhone XR) XL (iPhone Plus 6, 6s, 7, 8)



Phone holder produced with the same real leather used for supercar seats.

099069NR..
099069AZ..

UMBRELLA

Polyester automatic umbrella. Ø 130 cm



099068

POUF



Soft pouf diameter 40 cm, height 40 cm, with printed S logo in the upper surface.

07500068

LEATHER KEY HOLDER



Keychain produced with the same real leather used for supercar seats.

099070NR..
099070AZ..

MICROFIBRE SPORT TOWEL

DIMENSIONS: 100 X 50 CM
COMPOSITION: 90% POLYESTER, 10% NYLON

099073



SPORTSACK

DIMENSIONS: 33 X 51 CM

0160013AZ 0160013NR



THERMOS

CAPACITY: 0,4 LT

099072



KEYCHAIN



1 x

099071SUIT
099071SHOE
099071SEAT
099071GLOVE

KIT 10 x

099071SUIT10
099071SHOE10
099071SEAT10
099071GLOVE10

BADGE HOLDER

1 X

0992BADGE

KIT 10 x

0990BADGE10



SPARKY PELUCHE

099051

DIMENSIONS: 41 CM
COMPOSITION: POLYESTER

3+ YEARS



SUNGLASSES

099059



SEM-1 E-SCOOTER

Available from March 2020.

MATERIAL: ALLOY ■ **RANGE:** UP TO 25KM ■ **MAXIMUM SPEED:** 25KM/H ■ **MAX LOAD:** 120KG ■ **BATTERY:** 36V/7.5 AH
CHARGING TIME: 4-6 HOURS ■ **MOTOR POWER:** 350 W ■ **WHEELS:** 8,5"

Body size: 1150 x 480 x 1135 mm | Folding size: 1030 x 220 x 405 mm
 Ground distance: 100 mm | Net weight: 14.3 kg



Adjustable Height

- Adjust the height in 2 simple steps
- 3 height options possible
- Supports your back
- Ride in the most convenient position



Powerful Double Brake

- Double braking system
- Electric rear brake
- Rear drum brake
- Fast braking distance & smooth settings



Display: LCD | High-Luminous Front + Rear Light
 Max Gradability: 15° | Ingress Protection: IPX4



Powerful Battery

- High performance and long-lasting cells
- Choose between 7.5Ah
- Up to 35km on one single charge
- Rapid charging system



App

- Connects via Bluetooth to your phone
- Shows Speed, total length, actual length etc.
- Scooter Lock function for safety & security
- Regulate 3 riding modes (Eco, Normal, Sport)



FEW SECONDS FOLDING SYSTEM



099075AZ



099075RS



099075GR



099075BI

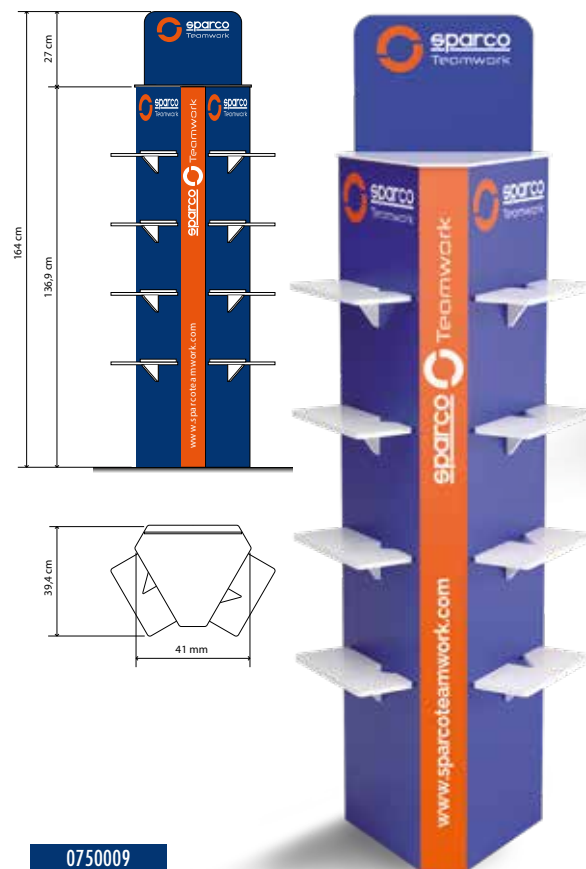


099075NR



TOTEM

SELF-STAND DISPLAY. Light and durable material, suitable to show 8 shoe models and a pair of shoes on the crown.



0750009

SHELF HIGHLIGHTER

H 17 x L 30 x P 17,5 cm

Light and durable material, suitable to show 1 shoe. **5-piece set.**



0750011

COUNTER DISPLAY "PEDAL SET"

H 31 x L 38 x P 28 cm

Shaped like a pedal set, with an unmistakable racing style.
Light and durable material, suitable to show 1 pair of shoes.



0750010

FLYER DISPLAY

H 39 x L 15 x P 15 cm

Flyers container, light and durable material, with an unmistakable racing style.



099064





teamwork@sparco.it
+39 011.22.40.911



sparcoteamwork.com